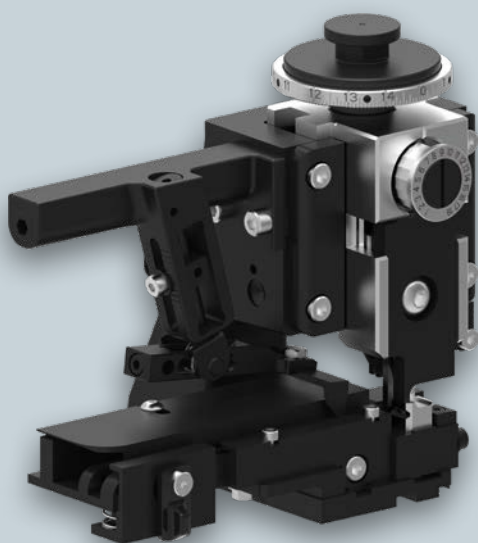




PÜPLICHHUISEN

VERBINDET SEIT 1926



OCEAN Applicator

PERFECT CONNECTOR TECHNOLOGY
FOR THE REQUIREMENTS OF TOMORROW



www.pueplichhuisen.de



THE OCEAN APPLICATOR SERIES

Standard Features

- Designed for high repeatability and fast through-put
- Manufactured from high grade tool steels
- Processed using state-of-the-art CNC equipment for tightest tolerances
- 30 and 40 mm Stroke
- Pre-Feed and Post-Feed
- Cut and No-Cut Carrier Options
- Adjustable Bench and Lead-Maker Strippers
- Fine and tool-less wire and insulation crimp height adjustment
- Mechanical counter

Advantages of the Ocean Applicator series

- One applicator platform – modular family design
- 3 feed options: Mechanical, Pneumatic and Servo
- Open architecture allows for design flexibility
- Featuring a redesigned ram to housing interface for improved alignment and crimp consistency
- Finer incremental crimp height adjustment
- Improved and simpler adjustments on all feed units

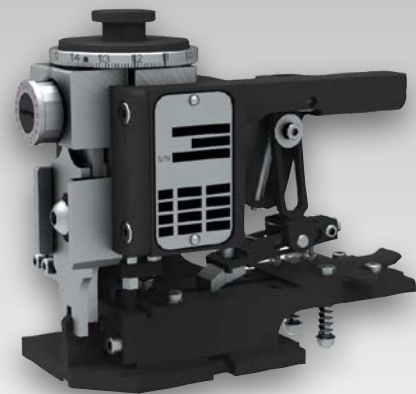
OCEAN Applicator series

The lead and harness industry of today is more price and quality competitive than ever before. TE Applicators are designed specifically to meet these demands. We strive to keep our applicators competitively price while providing the consistent, high-quality terminations you expect from TE.

Why a new TE Connectivity Applicator Design?

Standardized applicator offerings provide global design consistency and offer the ultimate flexibility with choices in feeding options.

The new OCEAN Applicators are designed so all feed options are interchangeable with the common base applicator. Our pneumatic and mechanical feed options have been completely redesigned. They offer a finer, more precise terminal positioning and quicker adjustability while being much more user friendly.



OCEAN Applicator with Mechanical Feed

- Most lead makers are only producing leads 60% of the time
- Applicators are a primary reason for machine inefficiency
- Terminal feeding issues are the most common adjustment
- OCEAN applicators provide
 - 60% improved ram / housing alignment
 - 50% faster set-up and adjustment times
 - 30% customer reported tooling life increase

Easy, predictable and precise adjustments

OCEAN Applicator Series

With the knowledge and experience of over a half century designing and manufacturing world leading applicators and tooling, TE is taking terminal crimping to a new level. Using the time proven HDM and HDI applicator platforms as a base and the innovation and improvements from the System III Applicator, TE is taking a large step forward.

TE has listened to customer input and market demands to innovate and improve the combined strength of these industry leading designs to create the new Ocean Applicator Series.

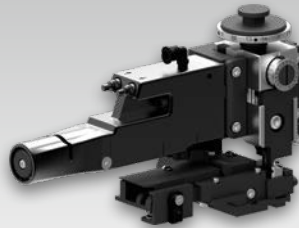
The lead and harness industry of today is more price and quality competitive than ever before. Crimping

standards continue to be raised to higher levels of quality and repeatability. The industry continues to expect more from application tooling. The Ocean Applicator Series was designed specifically to exceed the requirements of today and meet the demands of tomorrow.

By consolidating our applicator offering to this new applicator, TE can provide design consistency and tooling standardization to the market. One of the major benefits to the customer is offering the ultimate flexibility with a choice of feeding options: New and improved Mechanical and Pneumatic feeds combined with the innovative and precise Servo Feed option.



Mechanical Feed



Pneumatic Feed



Servo Feed

Standard-Features on all applicators

- Pre and Post-feed cam included
- Cut/no-cut Carrier Strip
- Adjustable Wire Stop / Stripper
- Terminal Hold-down
- Mechanical Counter
- Wire and Insulation Fine Adjustment
- 30 and 40 mm stroke
- Option: Smart Applicator-Kit
- Option: Detachable Lubricator Assembly
- 60% tighter fit between ram and housing for improved alignment and crimp consistency
- Easy accessibility
- Single tool for all adjustments

New mechanical Feed



Existing condition:
"instant acceleration" when the cam and follower come into contact. This causes the terminal to be thrown forward instantly.

Industry Standard



New Design:
cam and follower are in constant contact which offers superior feeding performance. This design gradually starts the terminal into the feeding process.

OCEAN Series

OCEAN Applicator Facts and Features



Mechanical Feed

The Cam/follower design produces the most repeatable feed in the industry. Independent forward/backward adjustment.



Pneumatic Feed

Independent forward/backward adjustments, independent flow controls repeatable feed.



Servo Feed

Machine reads iButton data to adjust stroke and placement positions automatically. Motorized feed allows operator to push a button for precision adjustments.

60% improvement in ram/housing fit minimizes system noise for improved Crimp Quality Monitoring.

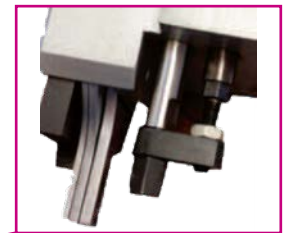
Option: Smart Applicator

Integrated data chip stores set-up and maintenance information.

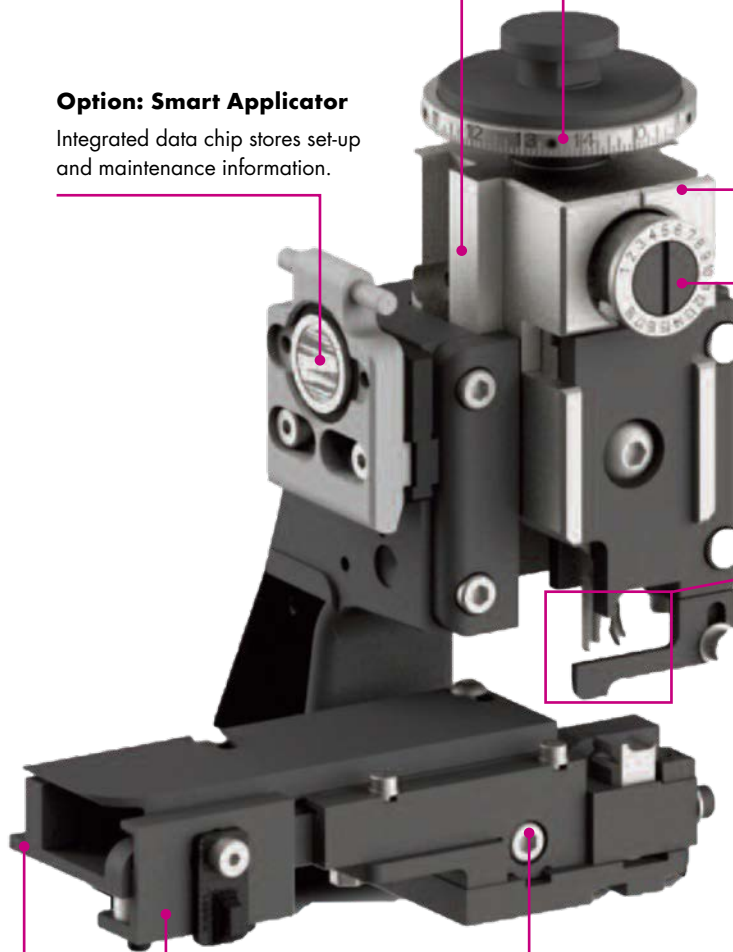
Fine adjust wire crimp height with range of 1.5 mm in increments of 0.01 mm.

Chrome plated ram for improved lubricity, corrosion resistance, and wear.

Large insulation crimp height adjustment range.



Touch-less spring loaded hold down prevents terminal damage during crimp. No adjustments required for wire or crimp height changes.



Spring loaded terminal drag designed for easy loading/unloading.

Adjustable strip guide for precise bell-mouth placement.

Precision machined strip guide customized for each terminal application.

- For all side-feed and end-feed versions
- Simple attachment
- Broad wick and variable adjustments for complete terminal coverage
- Clear composite shell for easy viewing of lubricant levels



Detachable Lubricator Assembly



AMP, CERTI-CRIMP, CERTI-LOK, OCEAN, PRO-CRIMPER, TE Connectivity and TE Connectivity (Logo) are trademarks.

The whole world of tooling equipment ...



Hand Tools

1 Certified hand tools

- SAHT Straight Action CERTI-CRIMP II HandTool
 - DAHT Double Action Hand Tool
 - HHHT Heavy Head Hand Tool
- Widely used in aircraft and military applications.

2 Hand tools for SDE die sets

- PRO-CRIMPER III Hand Tool
 - SDE SA (Straight Action) HandTool
- Accepts all TE SDE shoulders and pin dies.

3 Hand tool kits

Standard and customised hand tool kits for various applications.

4 Reel-fed CERTI-LOK hand tool

Special tool that applies terminals from special small reels.

5 Insertion and extraction tools

Insert discrete terminals into connector housings or remove them.



Bench Presses

1 AMP 3/K-40 and AMP 5/K-40 terminator

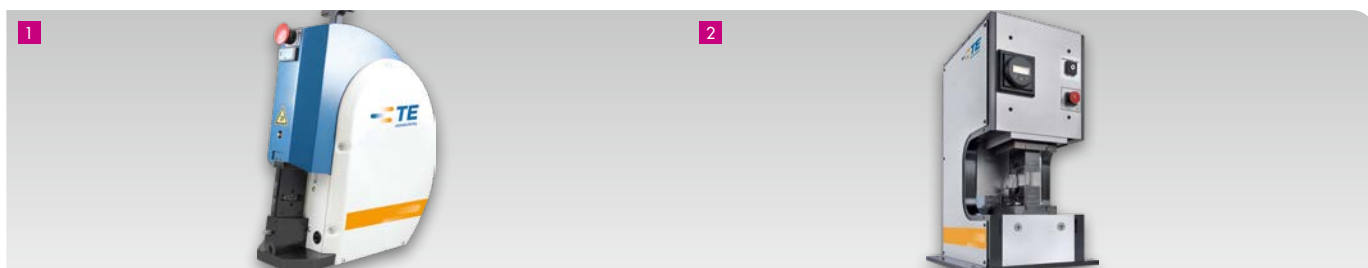
AMP 3/K-40 for cross section ranges 0,03 – 2,5 mm²
AMP 5/K-40 for cross section ranges 0,03 – 6,0 mm²

2 AMP 3/K-40 and AMP 5/K-40 stripping unit

AMP 3/K-40 and AMP 5/K-40 with optional retrofittable stripping module.

3 CQM II (Crimp Quality Monitor)

Real time crimp height measurement.



Bench Presses for loose piece terminals

1 AT-SC MKII Pneumatic safety crimping machine

Maximum ease of use with optimum safety.

2 AT-66 Hydraulic Crimping Machine

Various applications with a crimp force of 150 kN.

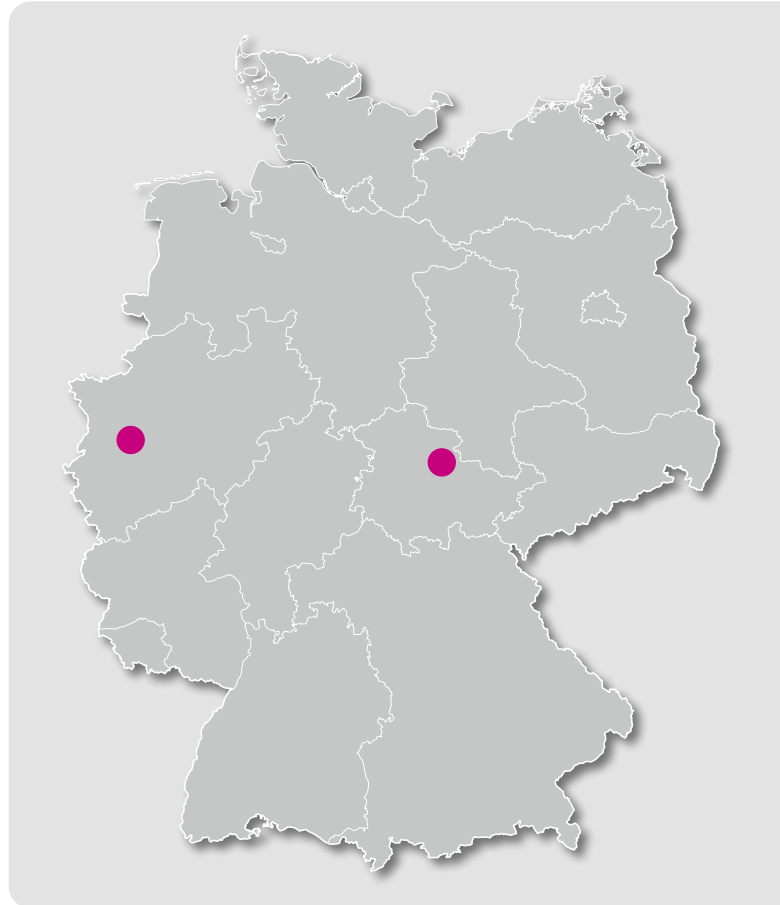
... for more information, join our website TE Application Tooling:
www.tooling.te.com/europe

The PÜPLICHHUISEN company, founded in 1926, is a leading distribution company with a nationwide presence in the field of electrical connection and connection technology.

Advice at manufacturer level and our customer oriented service are ensured by the competence and logistics centers in Duisburg and Sömmerda.

Our sales engineers in your area will help you with your interface problems. Over 180 employees in sales, logistic and production are strived to fulfill the wishes of over 6.500 customers today.

Our high quality thinking is supported by quality and environmental management in accordance with DIN EN ISO 9001/14001.



KARL PÜPLICHHUISEN GMBH & CO. KG
Keniastraße 20
47269 Duisburg
Phone +49 203 99826-0
E-Mail info@phuisen.de



PÜPLICHHUISEN Kabeltechnik GmbH
Production site in Sömmerda